



## Extend C Band 4 Port Linear Polarization Duplexer

### 【Product introduction】 :

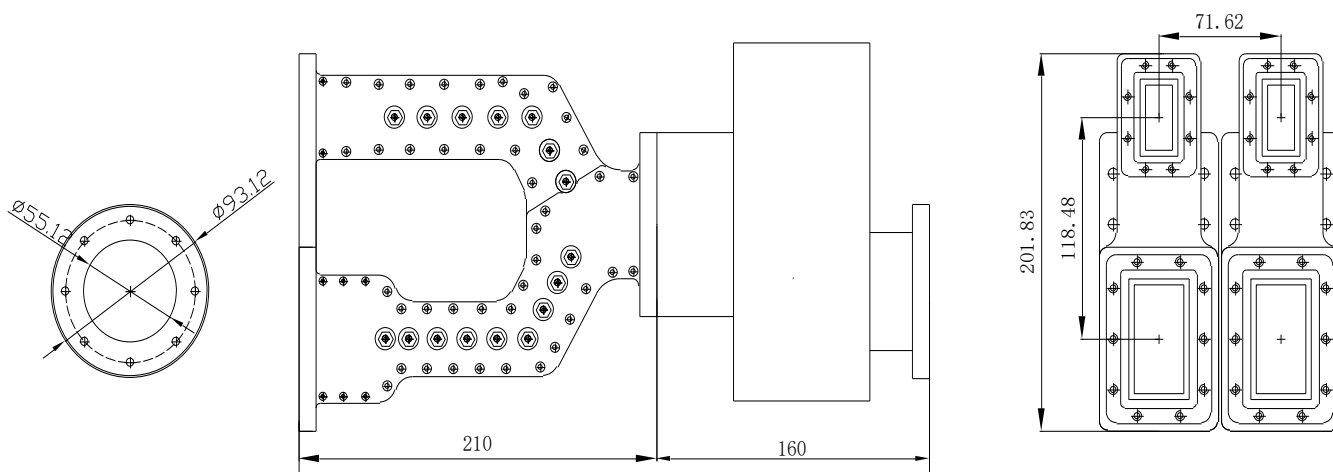
Contains OMT and 2 duplexers.

Features: wide working bandwidth, low insertion loss, great rejection, high Power Capacity.

Function: Linear polarization T/R mode: Same/different frequency; 1/2 polarization Circular polarization T/R mode: Same/different frequency; LHCP/RHCP polarization (by adding circular polarizer).

### 【Technical indicators】 :

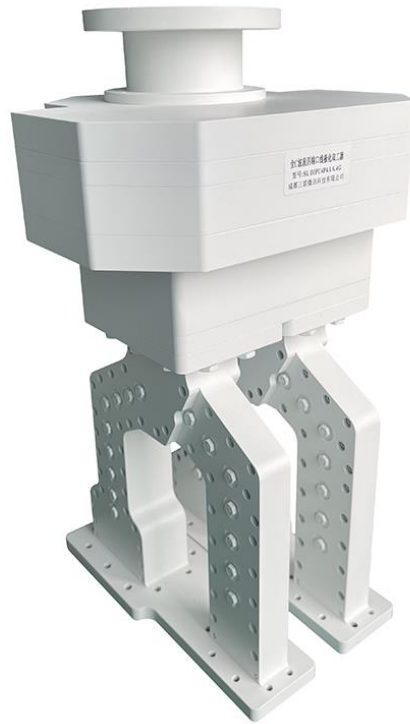
1. Working frequency: RX: 3.40~4.80GHz; TX: 5.85~7.025GHz
2. VSWR: 1.25:1 MAX
3. Insertion loss: 0.20dB MAX
4. Isolation: 95dB MIN
5. cross polarization: 40dB MIN
6. Power Capacity: 5KW(CW)
7. Interface: WR229(RX), WR137(TX)
8. Structure:



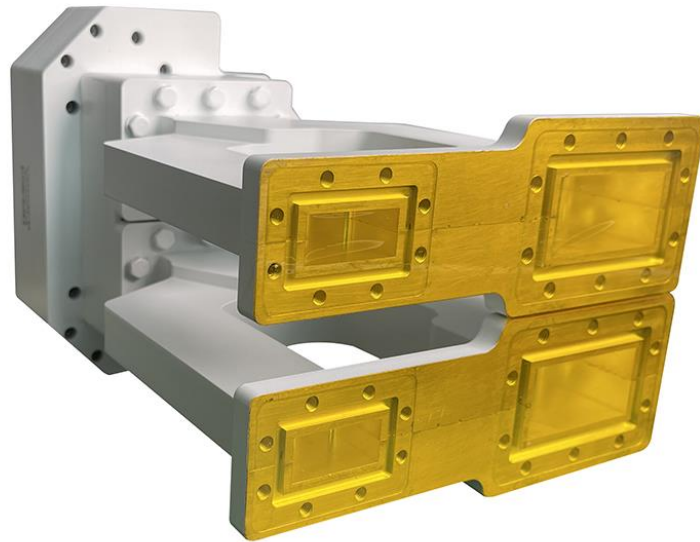
Extend C Band 4 Port Linear Polarization Duplexer



Chengdu Sanlianweixun Technology Co., Ltd.



(a)



(b)

Extend C Band 4 Port Linear Polarization Duplexer