



Ku-K-Ka multi band orthogonal mode components (compact type)

【Product introduction】 :

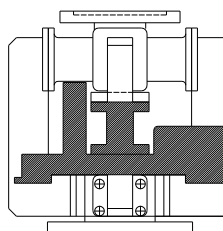
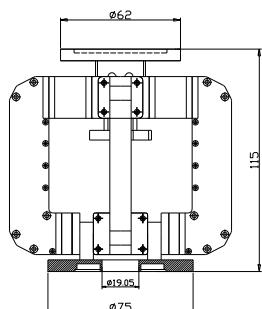
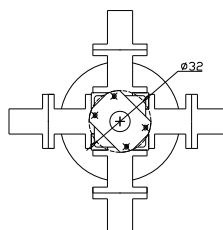
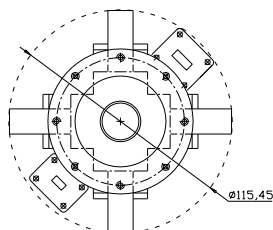
Including splitter, combiner, filter, septum polarizer, connecting waveguide.

Features: wide bandwidth, low insertion loss, small size.

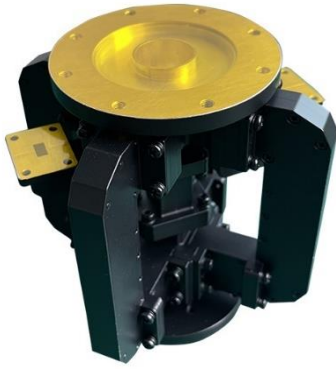
Function: Separate or combine Ku/K/Ka satellite communication T/R signal. Ku band Linear polarization T/R mode (different frequency, horizontal/vertical polarization) K/Ka band: Circular polarization T/R mode (different frequency; LHCP/RHCP polarization)

【Technical indicators】 :

- Working frequency: Ku band: 12.25~12.75GHz (RX); 14~14.5GHz (TX)
K/Ka band: 19.6~21.2GHz (RX); 29.4~31.0GHz (TX)
- VSWR: 1.30:1 MAX
- Insertion loss: Ku: 0.3dB MAX; K/Ka: 0.4dB MAX
- Isolation: (K/Ka)/Ku: 60dB MIN
K/Ka: TX/RX 85dB MIN
K/Ka: RX/TX 50dB MIN
- circular polarizability (K/Ka): 1.0dB MAX
- Orthogonal mode isolation: 40dB MIN
- Orthogonal mode phase difference: $\pm 4^\circ$ MAX



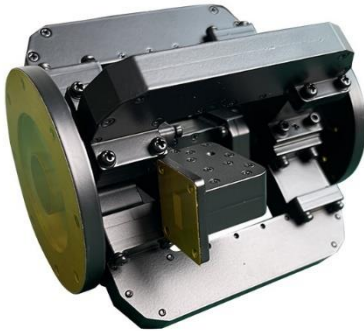
Ku/K/Ka multi band orthogonal mode component (compact type)



(a)



(b)



(c)



(d)

Ku/K/Ka multi band orthogonal mode component (compact type)