



C band linear polarization component

【Product introduction】 :

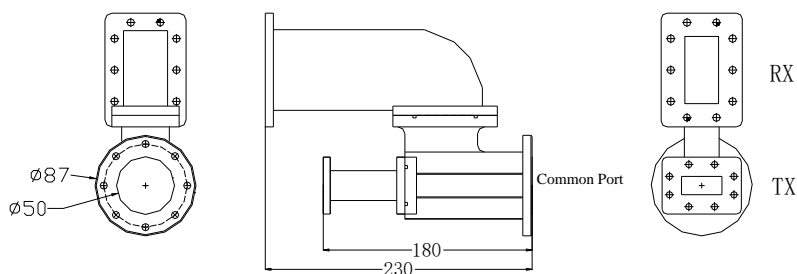
Including OMT, duplexer.

Features: High power Capacity, great isolation.

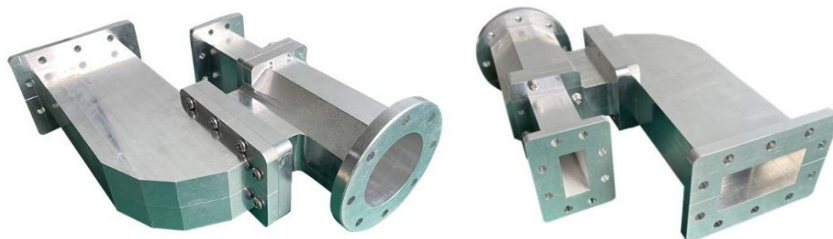
Function: Transceiver duplex, dual-mode transmission

【Technical indicators】 :

1. Working frequency: RX: 4.50~4.80GHz; TX:6.725~7.025GHz
2. VSWR: 1.25:1 MAX
3. Insertion loss: RX: 0.25dB MAX, TX: 0.15dB MAX
4. cross polarization: 35.0dB MIN
5. Isolation: TX/RX: 90dB MIN
6. Power Capacity: 5KW
7. Air tightness requirements: 5psig
8. Interface: WR229 (RX);WR137(TX)
9. Structure:



C band linear polarization component



C band linear polarization component