



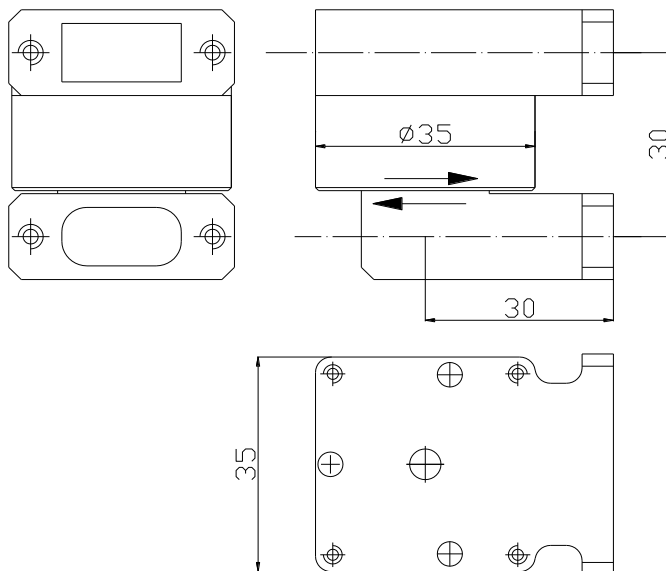
Ku Band U Type Waveguide Rotary Joint

【Product introduction】 :

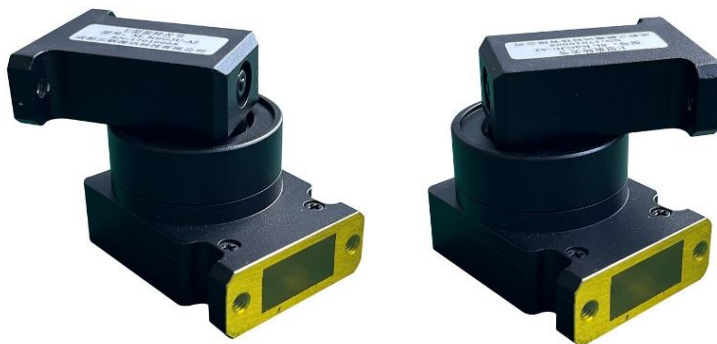
Features: low insertion loss, stable structure.

【Technical indicators】 :

1. Working frequency: 14~14.5GHz
2. VSWR: 1.20:1 MAX
3. Insertion loss: 0.2dB MAX
4. Operating temperature: -55°C~+85°C
5. Interface: WR75 Non-standard flange
6. Structure:



Ku Band U Type Waveguide Rotary Joint



Ku Band U Type Waveguide Rotary Joint